

# Installation Instructions

## 安裝說明書

### REAR DAMPER DROP KIT

後避震器下移套件

#Q0658

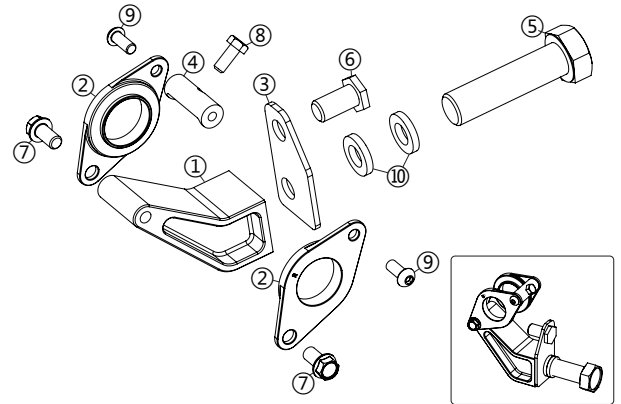
19"-up rims recommended. Does not fit OE 18" rims.  
適用於19吋以上鋁圈·原廠18吋鋁圈不適用。

## Application 適用車型

Toyota Alphard '15-present  
Toyota Vellfire '15-present

## Components 內含配件

- ① Drop bracket R/L 下移座 左/右 .....2pcs
- ② Side bracket-R/L 側邊對鎖支架-左/右 .....2pcs
- ③ Inner bracket 內側支架 .....2pcs
- ④ Upper Tubular bracket 上端鎖管支架.....2pcs
- ⑤ Hex bolt 六角螺絲 (M16x1.5x90).....2pcs
- ⑥ Hex bolt 六角螺絲 (M16x1.5x30).....2pcs
- ⑦ Flange bolt 凸緣螺絲 (M10x1.25x20).....4pcs
- ⑧ Hex bolt 六角螺絲 (M8x1.25x20).....2pcs
- ⑨ Button head bolt 半圓頭螺絲 (M8x1.25x20)...4pcs
- ⑩ Washer 華司 (30x16x5) .....4pcs

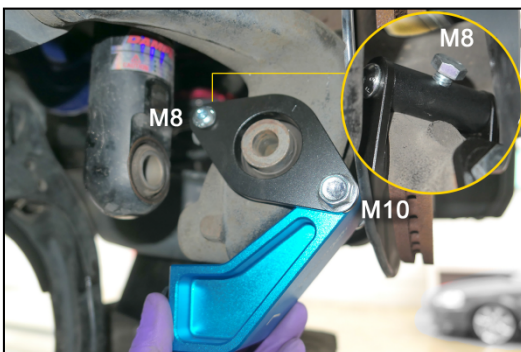


## Caution 注意事項

- Installation is recommended to be performed by licensed mechanics with necessary tools to ensure safety. Incorrect installation may cause injury, damage to the product or vehicle. 安裝建議由合格的技師及工具執行以確保安全·安裝錯誤可能對人員、產品及車輛造成傷害。
- Note the routing of wires and cables before installation, or please refer to factory manual. 安裝前請事先記下線路的安裝路徑及位置以維持原廠配置·有疑問時請參考原廠手冊。
- Tighten bolts and nuts firmly by using handtools, and with specified torque if mentioned. 安裝過程請使用手動工具確實鎖緊螺帽及螺絲·如有特別註明請依照說明指示的扭力上鎖。

## Instructions 安裝說明

1. Remove rear shock absorbers from knuckles.  
將後減震筒卸下轉向節(羊角)。
2. Remove toe control arms from knuckles.  
將後束角連桿卸下轉向節(羊角)。
3. Place the side brackets over the knuckle toe arm bushings.  
將側邊對鎖支架套入羊角上的束角連桿鐵套。
4. Install the upper tubular bracket using supplied M8 button head bolts (to side brackets) and M8 hex bolts (to knuckles).  
安裝上端鎖管支架·使用M8半圓頭螺絲鎖至側邊對鎖支架·M8六角螺絲鎖入羊角。
5. Install the lower drop brackets using supplied M10 bolts.  
將使用M10螺絲安裝下端下移座。



6. Install the inner brackets to knuckles using supplied M16 bolts (shorter).  
使用M16螺絲(較短)·將內側支架安裝至轉向節(羊角)。

7. Install the shock absorbers to the dropped mounting points using supplied M16 bolts (longer) and washers.  
使用M16螺絲(較長)·將減震筒安裝至新的降低鎖點。

8. Reinstall the toe control arms to knuckles. Tighten the control arm bolts when suspension is loaded.  
將後束角連桿裝回羊角·並於懸吊負重的狀態下將連桿螺絲鎖緊。

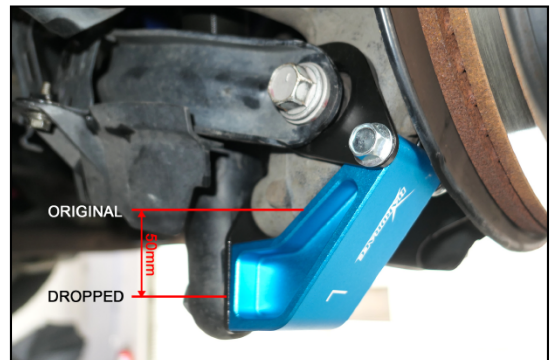
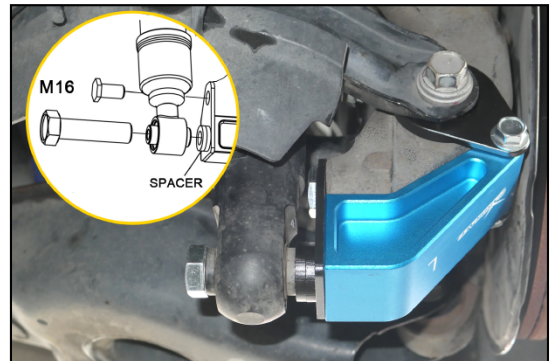


Illustration of installed state  
安裝完成示意圖